

ARIZONA ANTELOPE FOUNDATION

BONITA GRASSLAND FENCE REMOVAL/MODIFICATION (GM UNIT 32)

SEPTEMBER 19, 2015

Project Location: We will be working on private lands approximately 24 miles north of Wilcox and 12 miles west of Bonita, AZ off the High Creek Road.

Project Begins: Saturday, September 19th. Please meet at camp at 8:00AM. This is a one day project. If you arrive after 8:00 AM someone in camp will direct you to the project worksite.

Project Activity: We will be completing 2 separate projects. We will be removing approximately 1 mile of old fence line that is adjacent to a new wildlife fence, causing connectivity issues for mule deer and pronghorn. We also will be modifying 2 miles of existing right-of-way fencing along High Creek Road. The existing fence, on both sides of High Creek Road, requires the bottom smooth-wire and wooden stays to be disconnected and lifted to a height of 16 inches.

Pronghorn Benefits: This effort is located in direct proximity to ongoing mesquite removal for the Bonita Grasslands NRCS/G&F restoration project with a goal of improving up to 10,000 acres in the next 4 years. The areas adjacent to and within this project have been grubbed over the past 4 years. These projects will help ensure that resident pronghorn and mule deer can safely utilize open grassland corridors without interference due to fence line obstructions. It will assist in accomplishing a key portion of the overall Bonita Plains pronghorn travel corridor improvement project.

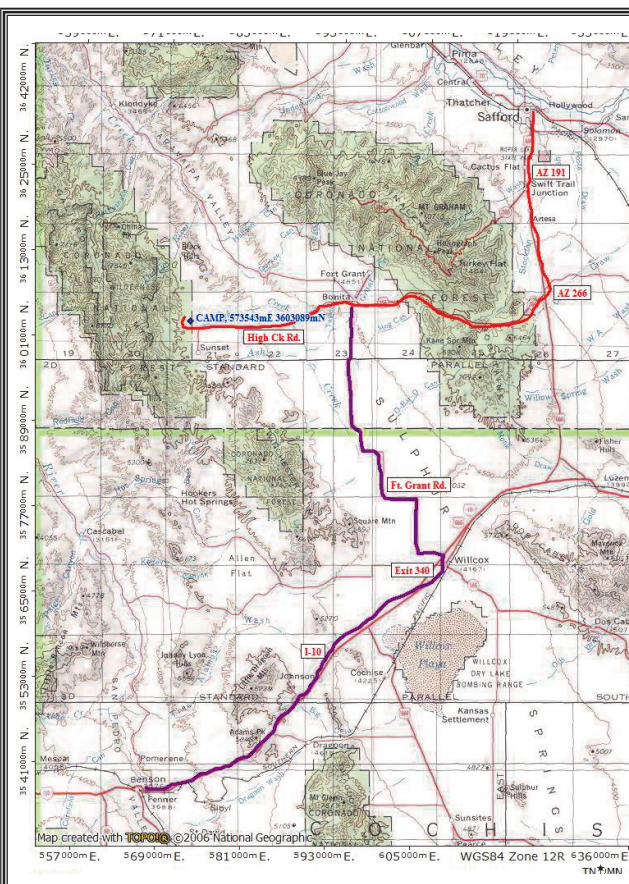
NFWF Grant Benefits: All labor hours, materials and mileage will be used to match the AAF's \$430K 6-year grant for our "Southeastern Arizona Grasslands Pronghorn Initiative". The grant has a goal of improving up to 100,000 acres of "Pronghorn habitat connectivity".

Meals: Please provide your own lunch to eat in the field on Saturday.

What to Bring: Work gloves (The AAF will have a limited supply), snacks, water, personal gear. There will be minor brushing to do along some of the fence lines.

Contact: Glen Dickens at (520-247-4907) for project information. If you are planning to attend, **please RSVP** to info@azantelope.org **by September 15th** so we can plan to have enough food and tools.

**THE AAF WILL PROVIDE DINNER
SATURDAY NIGHT & CONTINENTAL
BREAKFAST ON SATURDAY &
SUNDAY FOR ALL VOLUNTEERS**



Directions to Camp:

AAF project/camp site will be on USFS lands, approximately 1.5 miles west of the High Creek Road/Sunset Loop intersection. Access to the site is along a maintained travel corridor route, the site is trailer friendly. It is located approximately 33 miles west of the intersection of AZ 191 and AZ 266, and 35 miles north of I-10 and Fort Grant intersection from exit 340.

From Safford: Drive south 17 miles on AZ 191 to AZ 266. Turn southwest onto AZ 266, continue 19 miles to Bonita School (located just south of 266 on Fort Grant Road). Take High Creek Road (dirt road), located on north side of Bonita School, west approximately 14.5 miles to High Creek Road/Sunset Loop curve. Continue west along fenced travel corridor access road 1.5 miles to Campsite.

From Wilcox (Route 2): Turn north from I-10 at exit 340 (past Shell/Truck Stop) on Fort Grant Road. Drive the main paved road approximately 19 miles north (it has several dog leg turns) to the Bonita School. Just north of the school, turn left and proceed west on High Creek Road (dirt road) for approximately 14.5 miles to High Creek Road/Sunset Loop curve. Continue west along fenced travel corridor access road 1.5 miles to Campsite.

Camp GPS coordinates: Datum NAD83 0573543 E/ 3603089 N OR N32.33.46 W110.13.00

Visit our website for a larger printer-friendly map
www.azantelope.org



AZ Antelope Foundation
PO Box 12590
Glendale, AZ 85318

NONPROFIT ORG.
U.S. POSTAGE
PAID
PHOENIX, AZ
PERMIT NO. 318

UPCOMING ACTIVITIES

November 16th Annual Membership Meeting & Elections

Visit our website for more information
www.azantelope.org